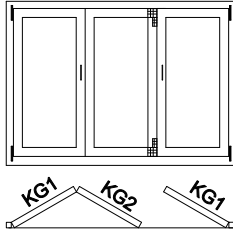
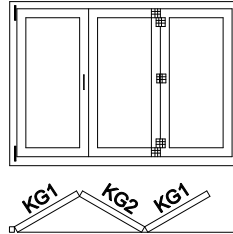


KATLANIR KAPI UYGULAMA TİPLERİ

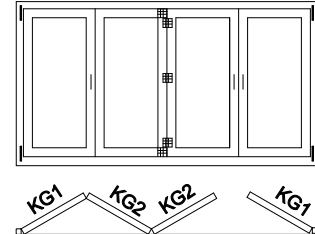
TİP 321



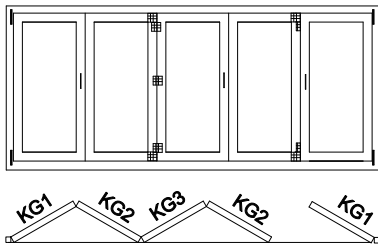
TİP 330



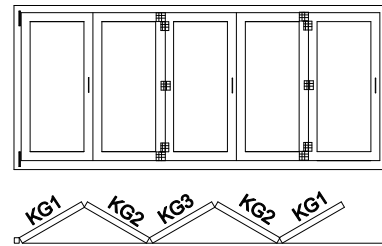
TİP 431



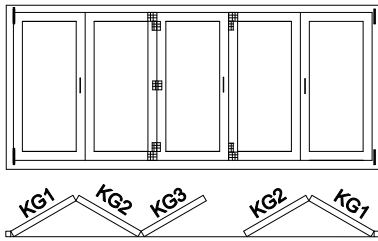
TİP 541



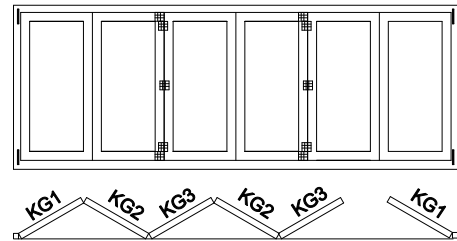
TİP 550



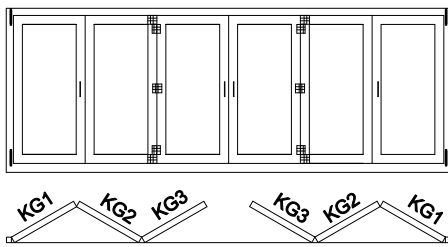
TİP 532



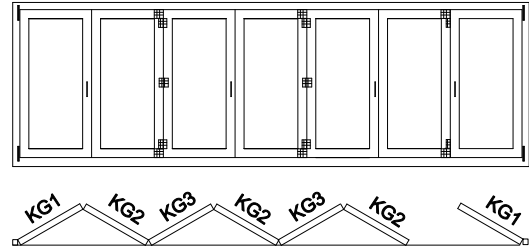
TİP 651



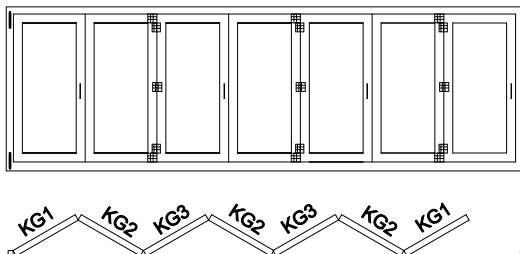
TİP 633



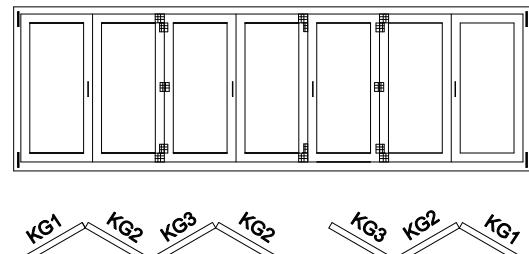
TİP 761



TİP 770



TİP 743



KATLANIR KAPIYA AİT GENEL BİLGİLER

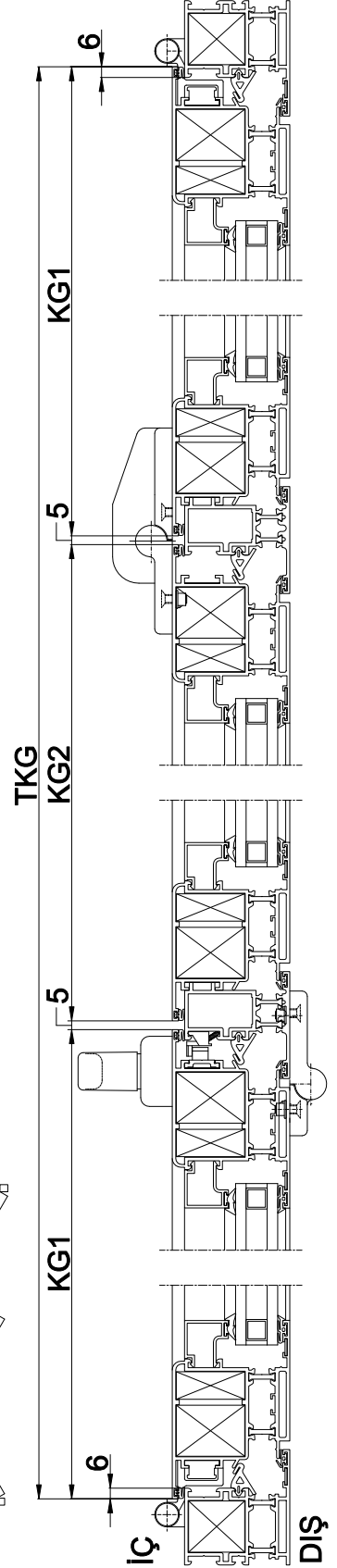
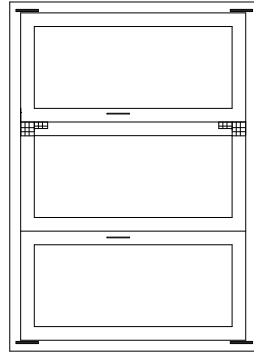
Kanat Geniřliđi Min: 600 mm, Max: 900 mm

Kanat Yükleđliđi Min: 850 mm, Max: 2400 mm

Kanat Ađırlıđı Max: 80 Kg.

Mekanizma Renk : Naturel Elokosal

TİP 321



* TİP görünüş ve KG1, KG2, KG3 uygulama yerleri için bkznz. sf: 29

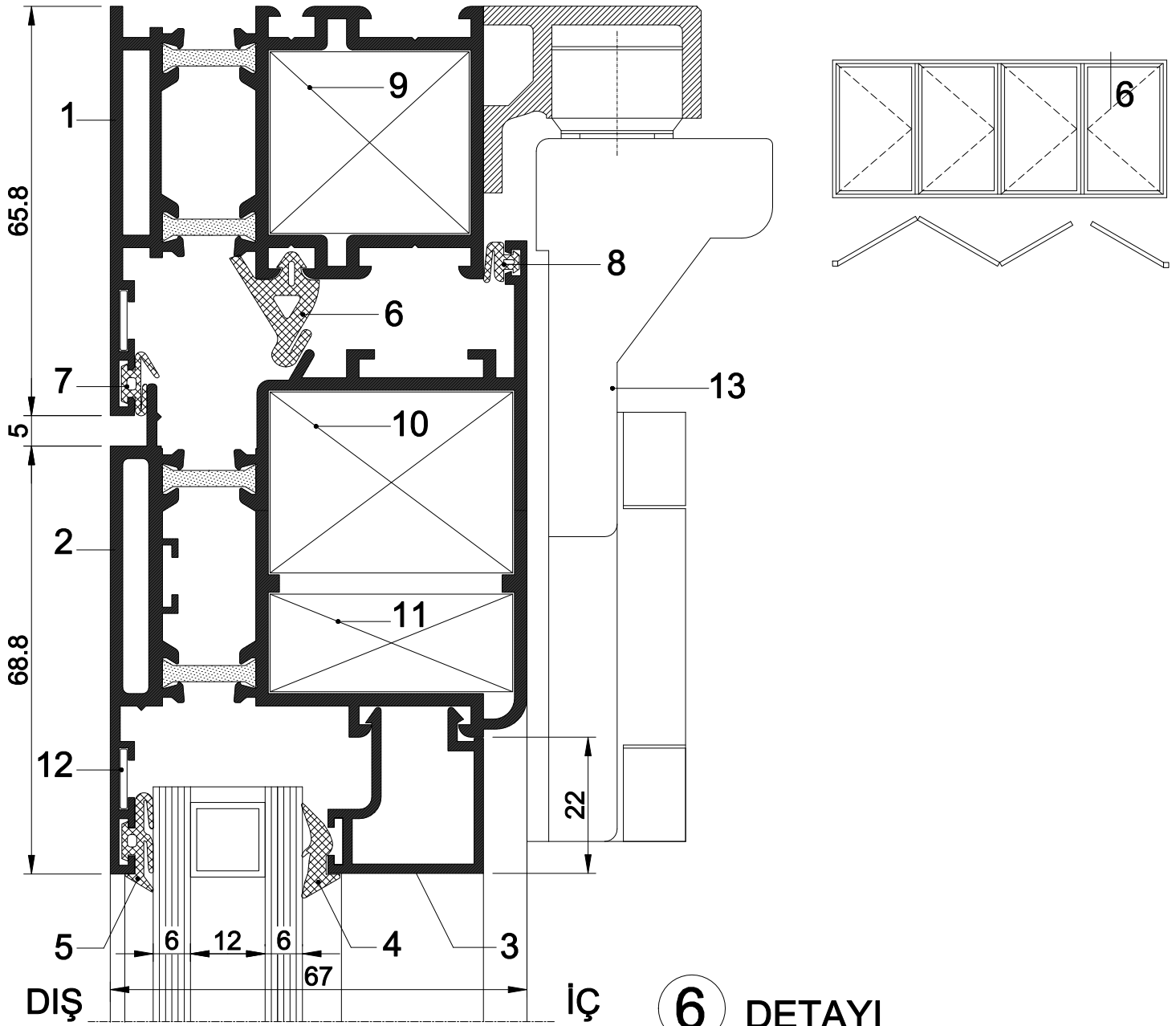
TİP	KG1 HESABI
321, 330	KG1: $\frac{TKG + 69}{3}$
431	KG1: $\frac{TKG + 143}{4}$
541, 550, 532	KG1: $\frac{TKG + 150}{5}$
651, 633	KG1: $\frac{TKG + 157}{6}$
761, 770, 743	KG1: $\frac{TKG + 231}{7}$
KG2 VE KG3 HESAPLAMALARI	KG2: KG1 - 79
	KG3: KG1 - 12

KG1: KANAT GENİŐLİĐİ 1

KG2: KANAT GENİŐLİĐİ 2

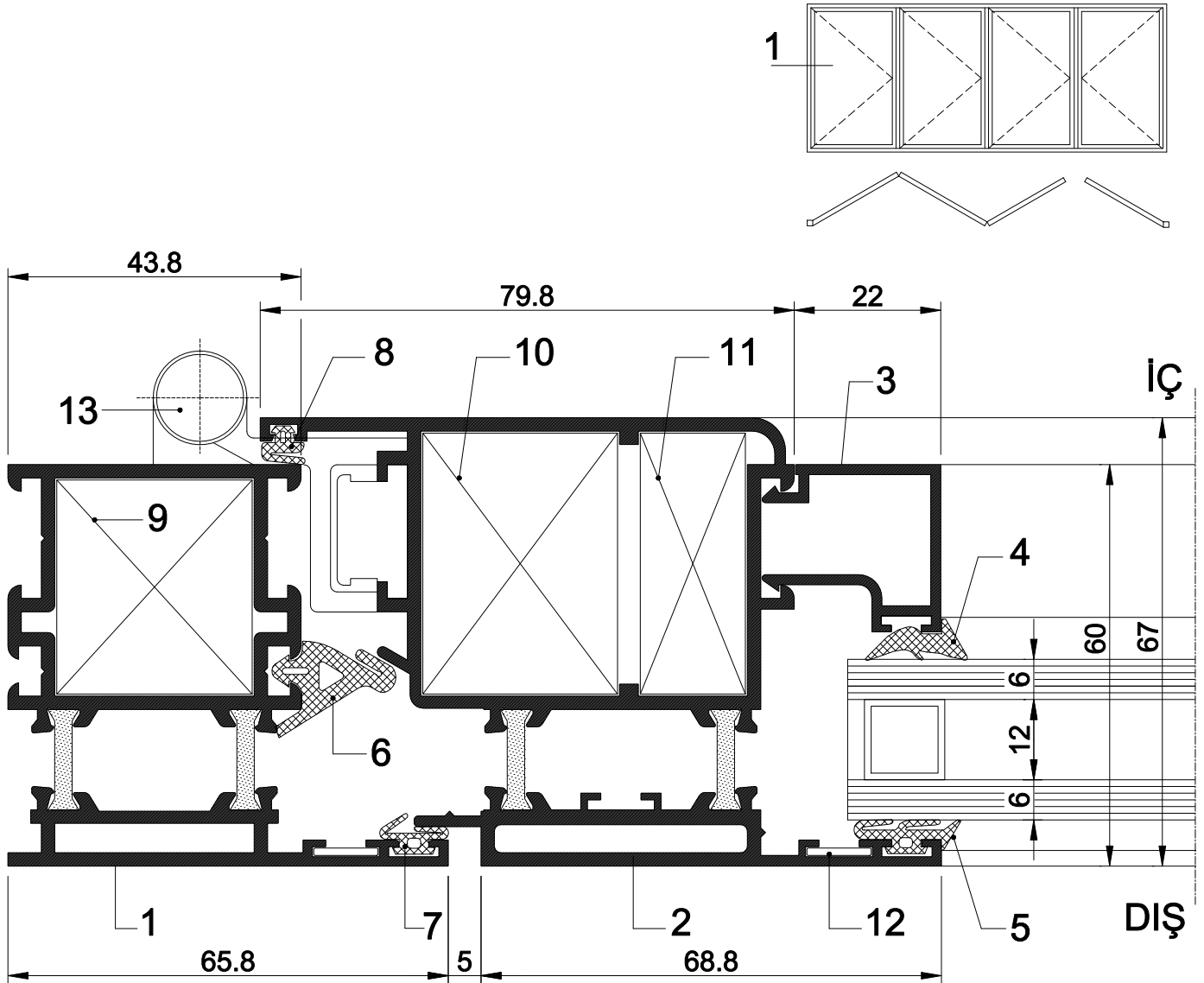
KG3: KANAT GENİŐLİĐİ 3

TKG: TOPLAM KANAT GENİŐLİĐİ



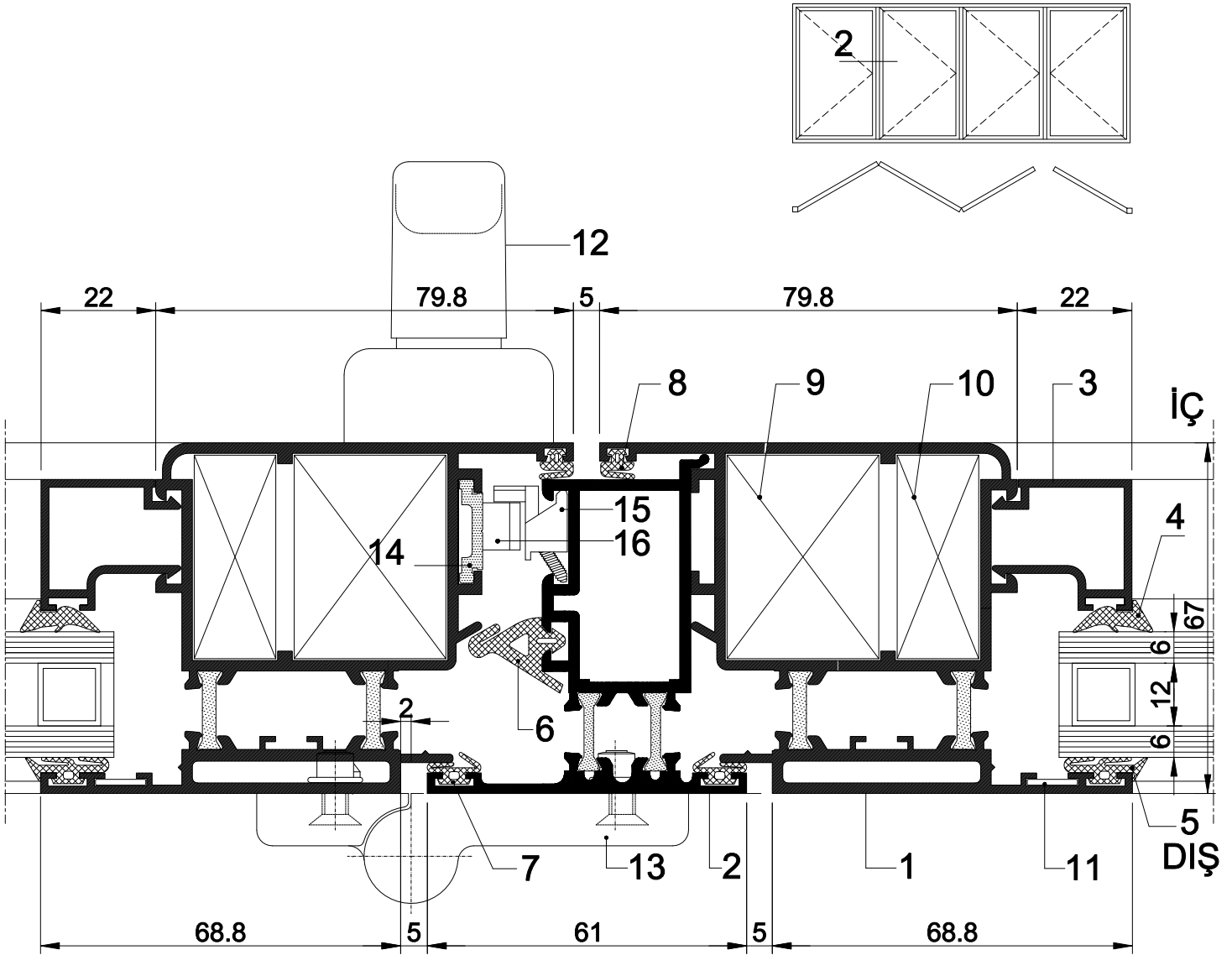
6 DETAYI

1. Kasa Profili	60 E 25	8. İç Bini Fiteli	40 D 06
2. Kanat Profili	60 E 62	9. Köşe Takozu	99-1151 (32.1 mm)
3. Cam Çıta Profili	40 E 78	10. Köşe Takozu	99-1151 (39.1 mm)
4. İç Cam Fiteli	40 D 03	11. Köşe Takozu	89-100 (39.1 mm)
5. Dış Cam Fiteli	40 D 02	12. Köşe Gönyesi	40 D 21
6. Kasa Takoz Fiteli	50 D 23	13. Katlanır Kapı Mekanizması	
7. Dış Bini Fiteli	40 D 08		



1 DETAYI

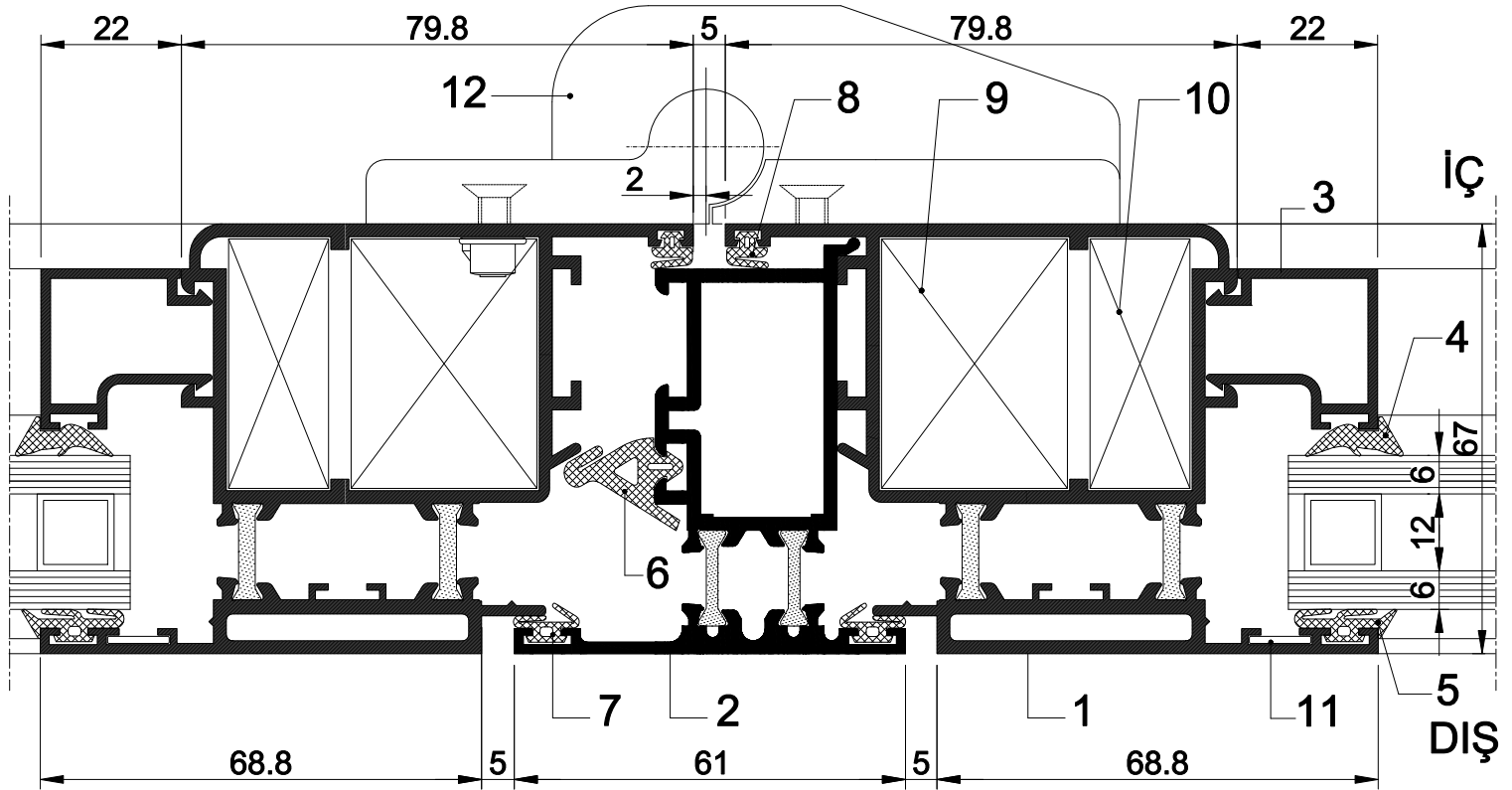
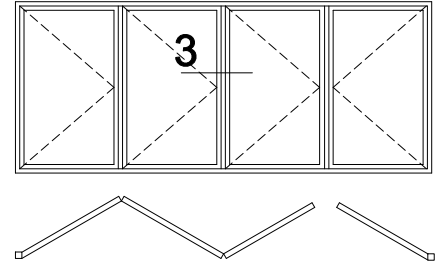
1. Kasa Profili	60 E 25	8. İç Bini Fitili	40 D 06
2. Kanat Profili	60 E 62	9. Köşe Takozu	99-1151 (32.1 mm)
3. Cam Çita Profili	40 E 78	10. Köşe Takozu	99-1151 (39.1 mm)
4. İç Cam Fitili	40 D 03	11. Köşe Takozu	89-100 (39.1 mm)
5. Dış Cam Fitili	40 D 02	12. Köşe Gönyesi	40 D 21
6. Kasa Takoz Fitili	50 D 23	13. Katlanır Kapı Mentşesi	
7. Dış Bini Fitili	40 D 08		



ÖLÇEK: 1/1.2

2 DETAYI

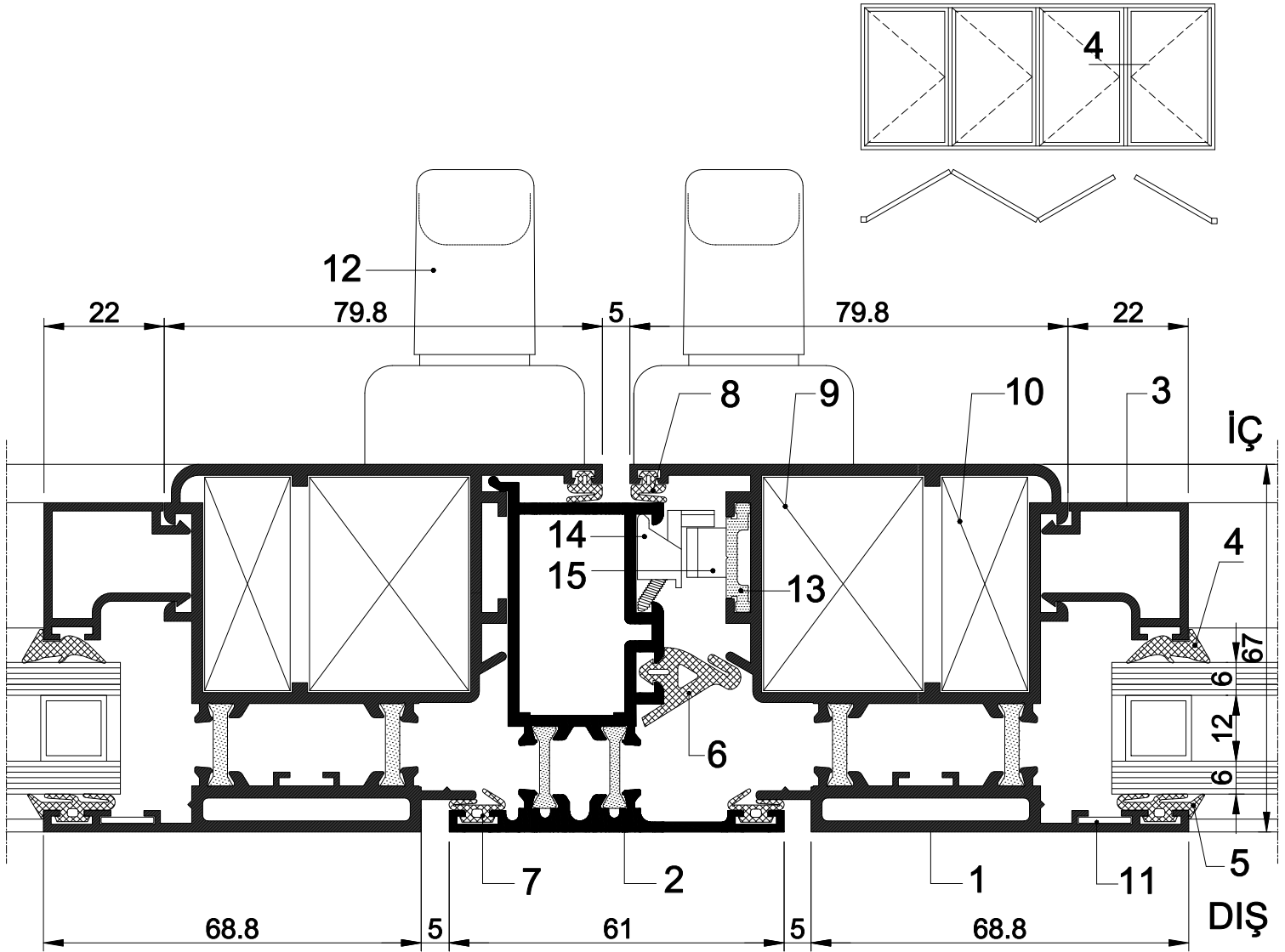
1. Kanat Profili	60 E 62	9. Köşe Takozu	99-1151 (39.1 mm)
2. Çift Kanat Adaptörü	60 E 33	10. Köşe Takozu	89-100 (39.1 mm)
3. Cam Çıta Profili	40 E 78	11. Köşe Gönyesi	40 D 21
4. İç Cam Fiteli	40 D 03	12. Katlanır Kapı Mekanizma Kolu	
5. Dış Cam Fiteli	40 D 02	13. Katlanır Kapı Mekanizma Menteşesi	
6. Kasa Takoz Fiteli	50 D 23	14. Tij Profili	88 033
7. Dış Bini Fiteli	40 D 08	15. Ayarlı Karşılık	
8. İç Bini Fiteli	40 D 06		



ÖLÇEK: 1/1.2

3 DETAYI

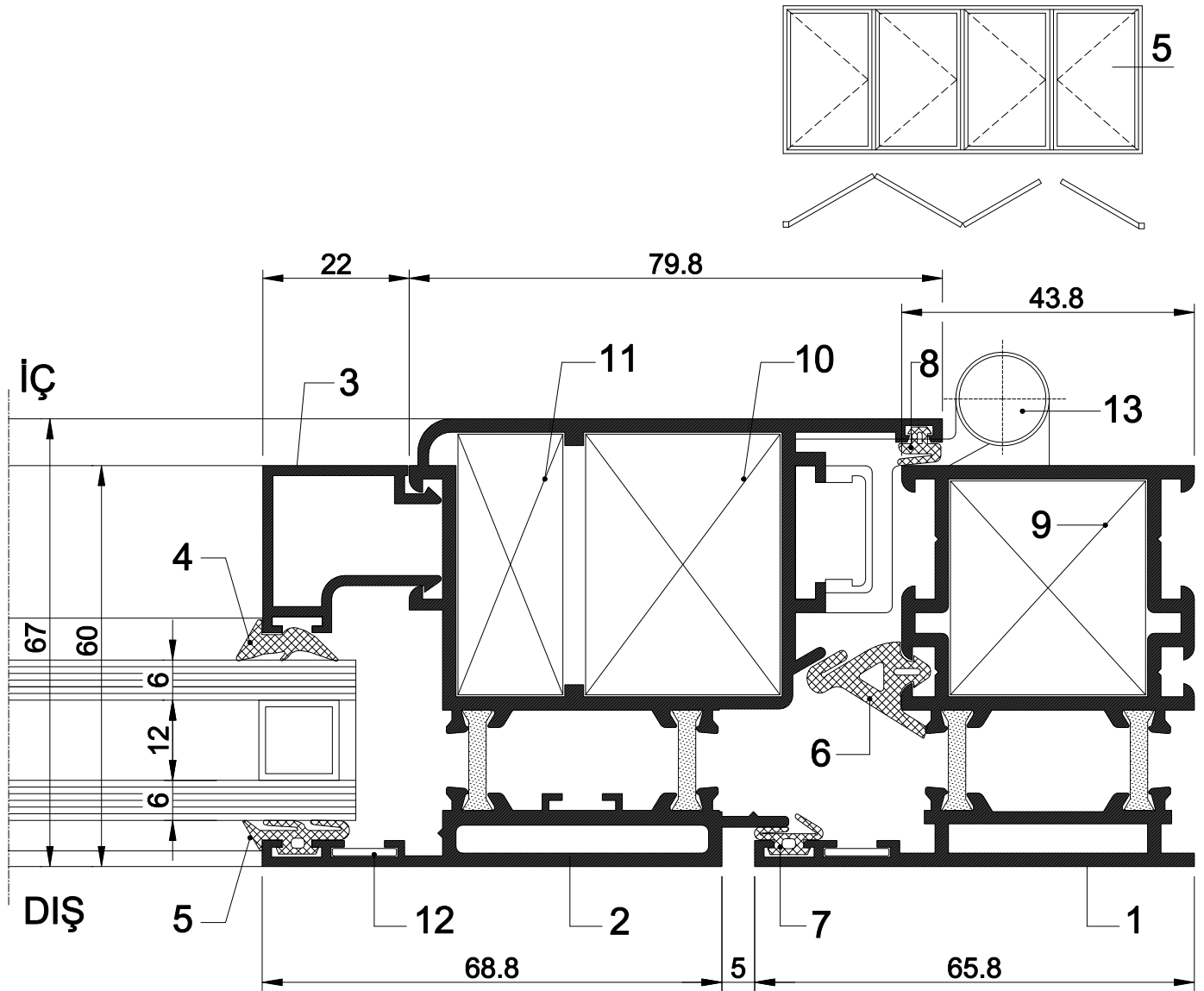
1. Kanat Profili	60 E 62	7. Dış Bini Fiteli	40 D 08
2. Çift Kanat Adaptörü	60 E 33	8. İç Bini Fiteli	40 D 06
3. Cam Çita Profili	40 E 78	9. Köşe Takoğu	99-1151 (39.1 mm)
4. İç Cam Fiteli	40 D 03	10. Köşe Takoğu	89-100 (39.1 mm)
5. Dış Cam Fiteli	40 D 02	11. Köşe Gönyesi	40 D 21
6. Kasa Takoz Fiteli	50 D 23	12. Katlanır Kapı Mekanizma Menteşesi	



ÖLÇEK: 1/1.2

4 DETAYI

1. Kanat Profili	60 E 62	9. Köşe Takozu	99-1151 (39.1 mm)
2. Çift Kanat Adaptörü	60 E 33	10. Köşe Takozu	89-100 (39.1 mm)
3. Cam Çıta Profili	40 E 78	11. Köşe Gönyesi	40 D 21
4. İç Cam Fitili	40 D 03	12. Katlanır Kapı Mekanizma Kolu	
5. Dış Cam Fitili	40 D 02	13. Tij Profili	88 033
6. Kasa Takoz Fitili	50 D 23	14. Ayarlı Karşılık	
7. Dış Bini Fitili	40 D 08	15. İspanyolet pimi	
8. İç Bini Fitili	40 D 06		



5 DETAYI

1. Kasa Profili	60 E 25	8. İç Bini Fiteli	40 D 06
2. Kanat Profili	60 E 62	9. Köşe Takozu	99-1151 (32.1 mm)
3. Cam Çita Profili	40 E 78	10. Köşe Takozu	99-1151 (39.1 mm)
4. İç Cam Fiteli	40 D 03	11. Köşe Takozu	89-100 (39.1 mm)
5. Dış Cam Fiteli	40 D 02	12. Köşe Gönyesi	40 D 21
6. Kasa Takoz Fiteli	50 D 23	13. Katlanır Kapı Mekanizma Menteşesi	
7. Dış Bini Fiteli	40 D 08		

