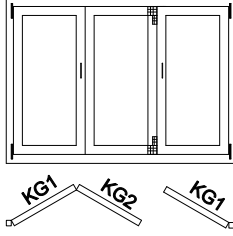
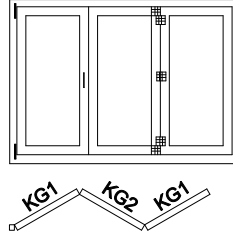


## KATLANIR KAPI UYGULAMA TİPLERİ

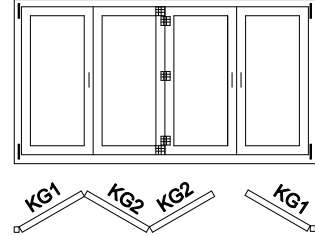
TİP 321



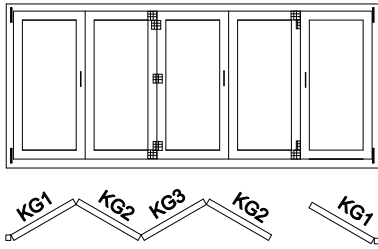
TİP 330



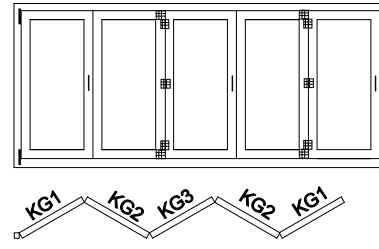
TİP 431



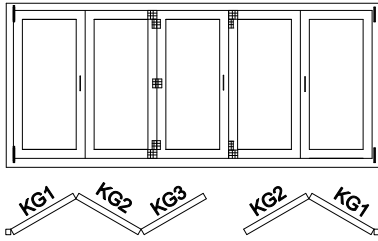
TİP 541



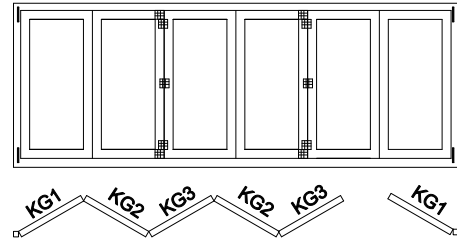
TİP 550



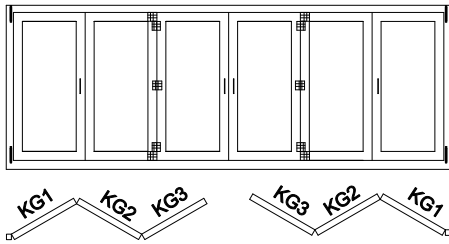
TİP 532



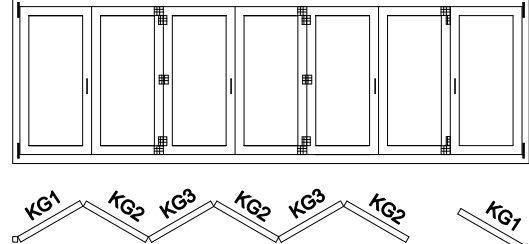
TİP 651



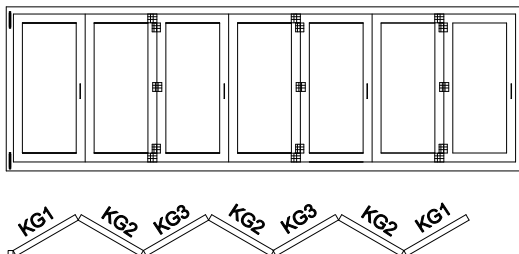
TİP 633



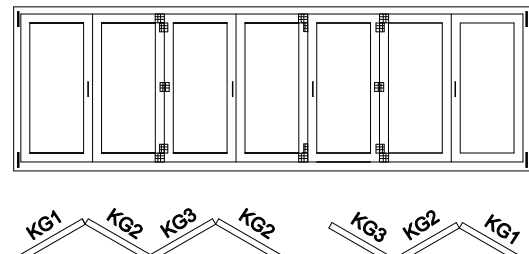
TİP 761



TİP 770



TİP 743



**KG:Kanat Geniřliđi**

### KATLANIR KAPIYA AİT GENEL BİLGİLER

Mekanizma : Siegenia Fs Portal - LM

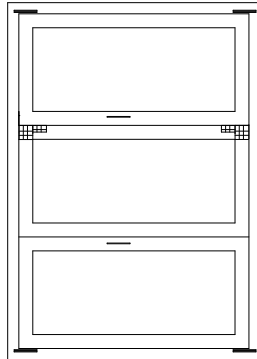
Kanat Geniřliđi min: 600 mm, max: 900 mm

Kanat Yüksekliđi min: 850 mm, max: 2400 mm

Kanat Ađırlıđı Max: 80 Kg.

Mekanizma Renk : Naturel Eloksal

### TİP 321



TİP	KG1 HESABI
321, 330	KG1: $\frac{TKG + 71}{3}$
431	KG1: $\frac{TKG + 147}{4}$
541, 550, 532	KG1: $\frac{TKG + 154}{5}$
651, 633	KG1: $\frac{TKG + 161}{6}$
761, 770, 743	KG1: $\frac{TKG + 237}{7}$
KG2 VE KG3 HESAPLAMALARI	KG2 : KG1 - 81 KG3 : KG1 - 12

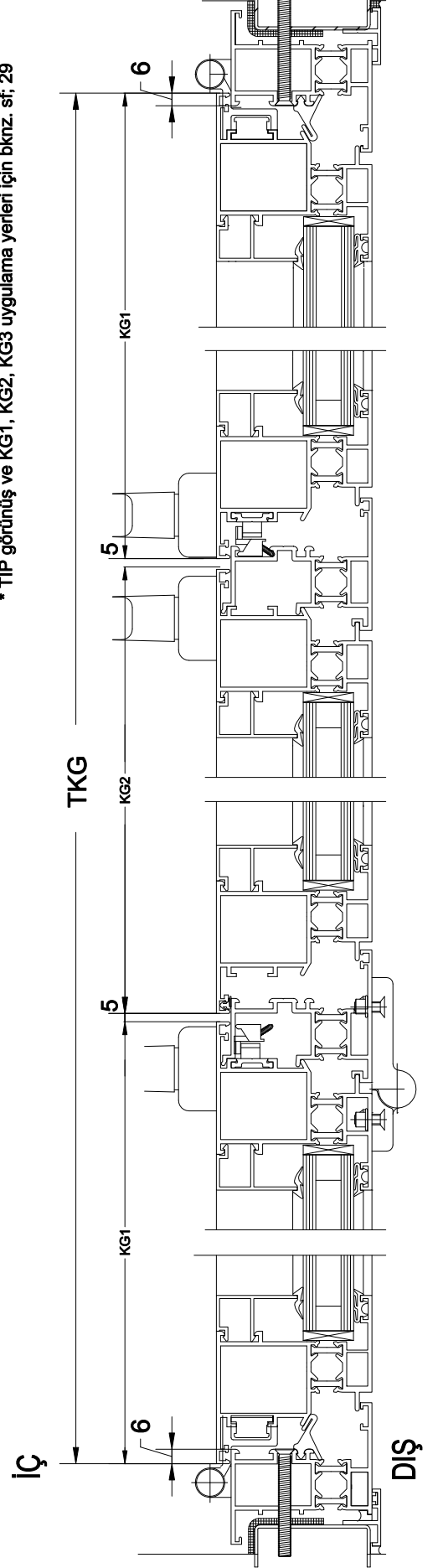
KG1 : KANAT GENİŐLİĐİ 1

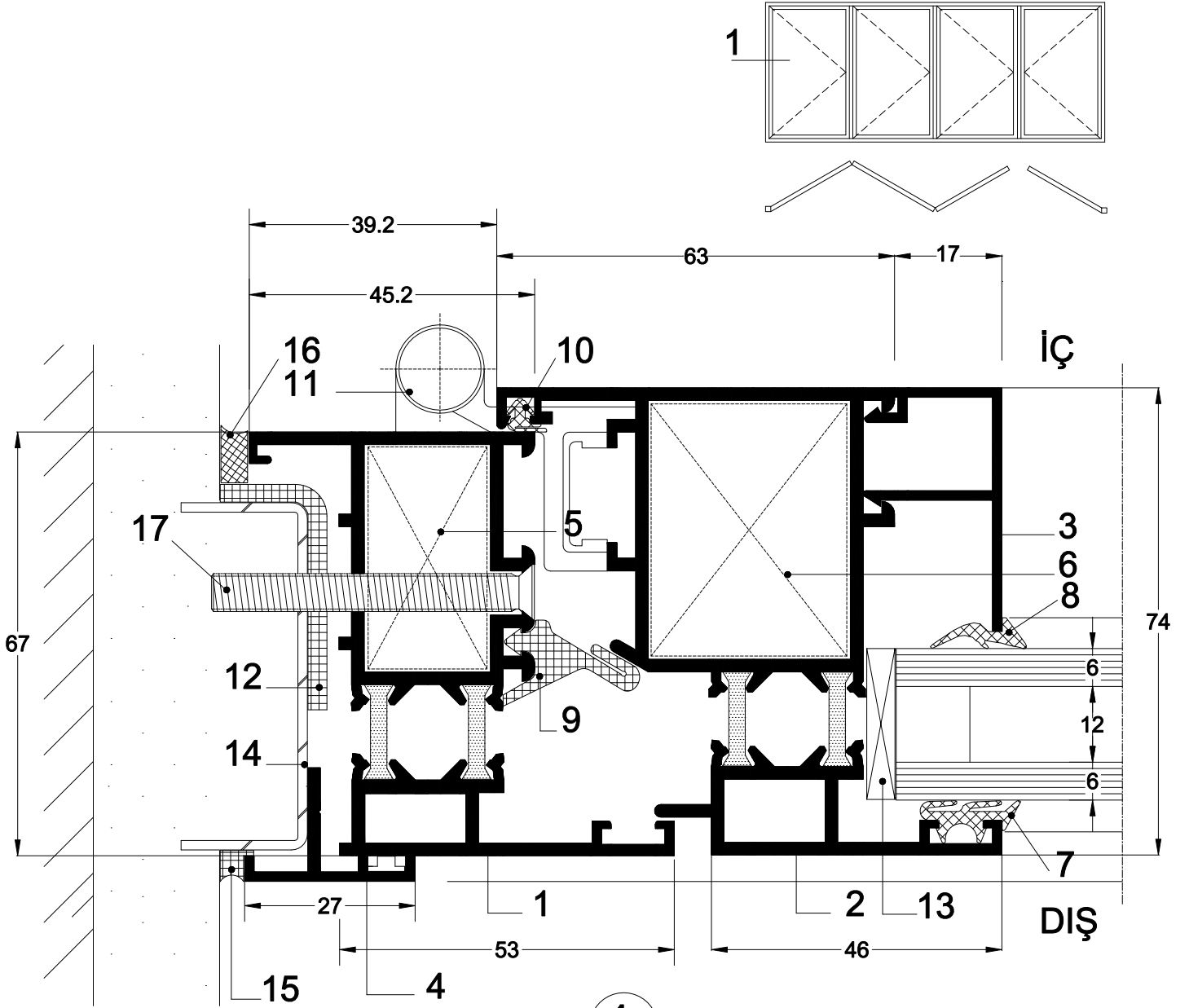
KG2 : KANAT GENİŐLİĐİ 2

KG3 : KANAT GENİŐLİĐİ 3

TKG : TOPLAM KANAT GENİŐLİĐİ

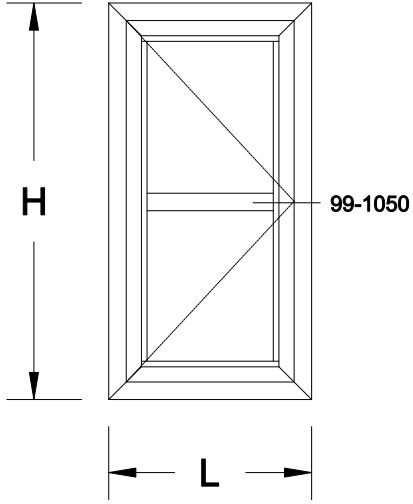
\* TİP görünüş ve KG1, KG2, KG3 uygulama yerleri için bkz. sf: 29



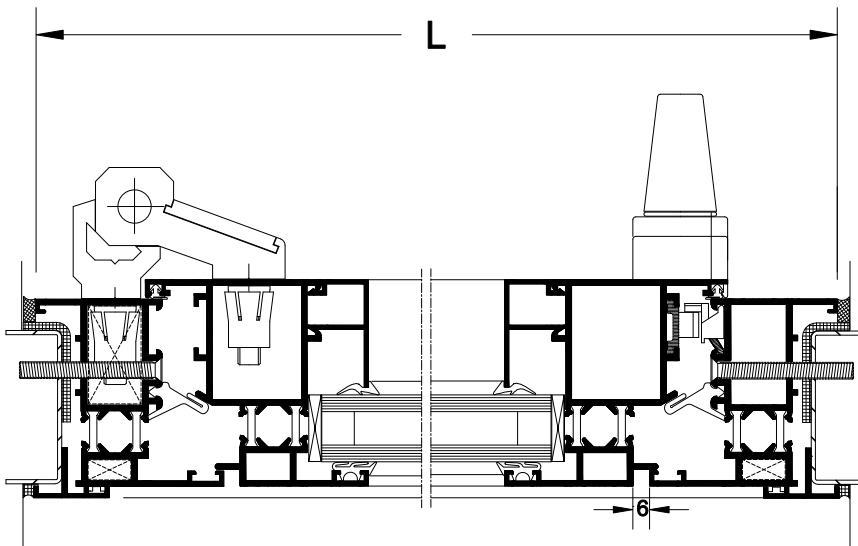
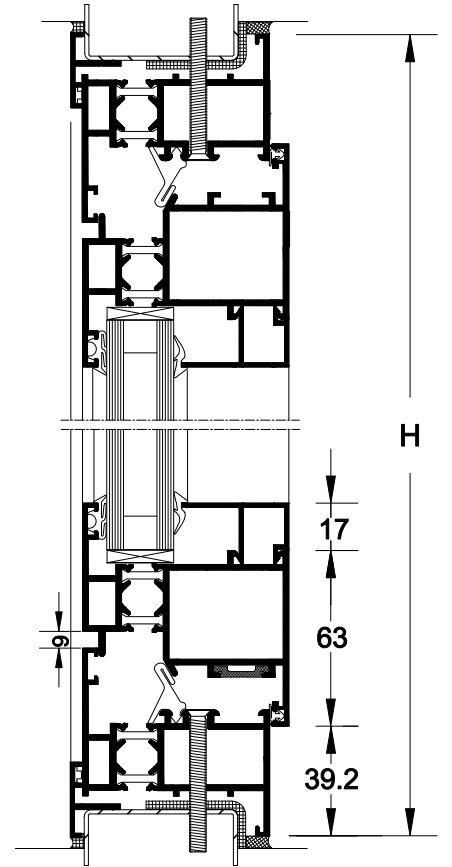


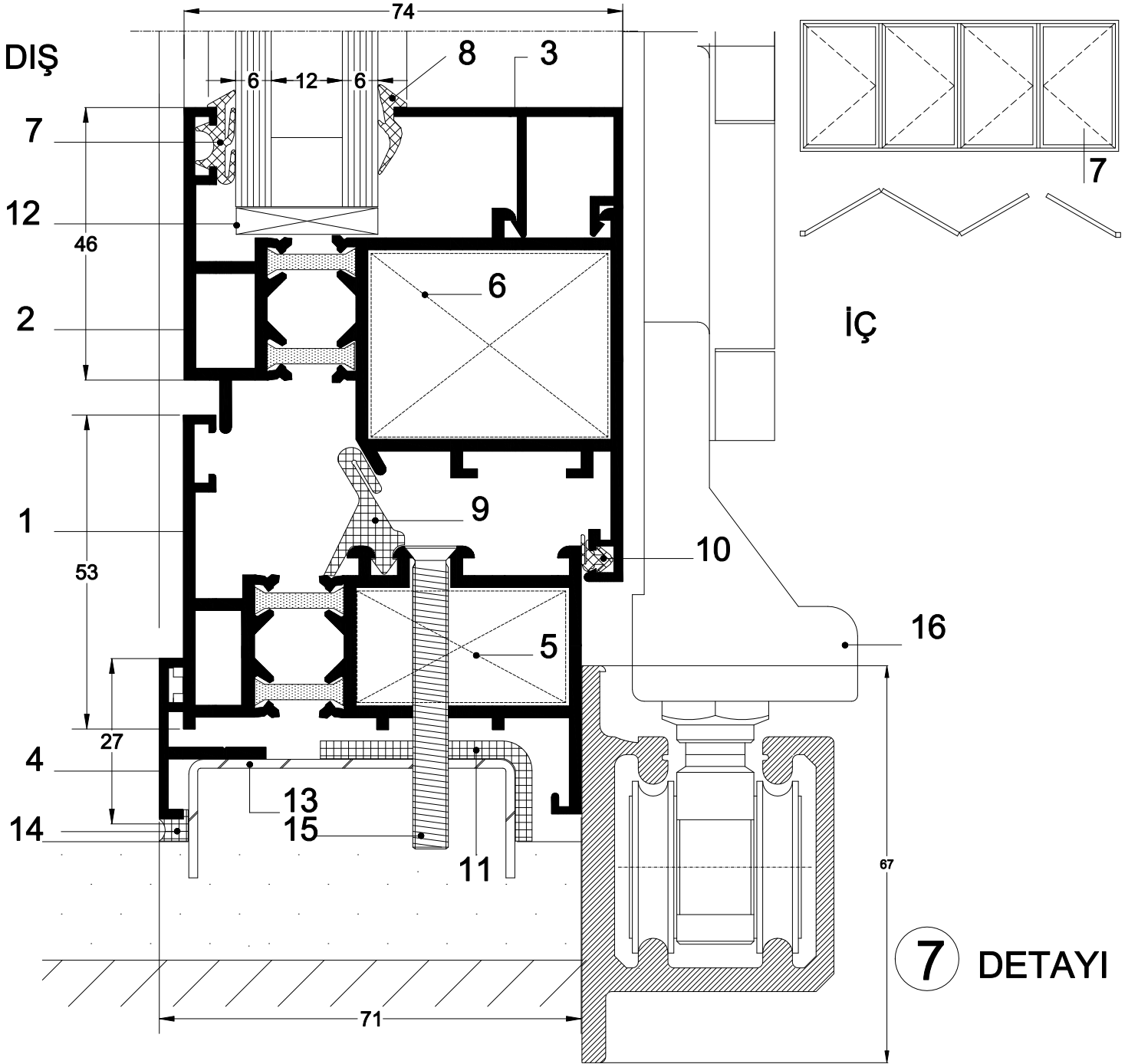
## 1 DETAYI

1. Kasa Profili	99-1044	9. Kasa Takoz Fiteli	2197
2. Kanat Profili	99-1048	10. Kanat Kulak Lastik Fiteli	2036
3. Cam Çıtası Profili	88-006	11. Sigenia Katlanır Kapı Mekanizma Menteşesi	
4. Kasa T' si	98-967	12. Macun Bant (ST-7-200)	2x40mm.
5. Kasa Köşe Takoza	93-517	13. Isı Cam Takoza	YSP-05
6. Kanat Köşe Takoza	99-1054	14. Korkasa	
7. Dış Cam Fiteli	2037	15. Silikon	
8. İç Cam Fiteli	2009A	16. 602 Çekomastik (Beyaz-Kahverengi-Siyah)	
		17. Bağlantı Vidası	6.3x50 YHB-A2 <sub>31</sub>



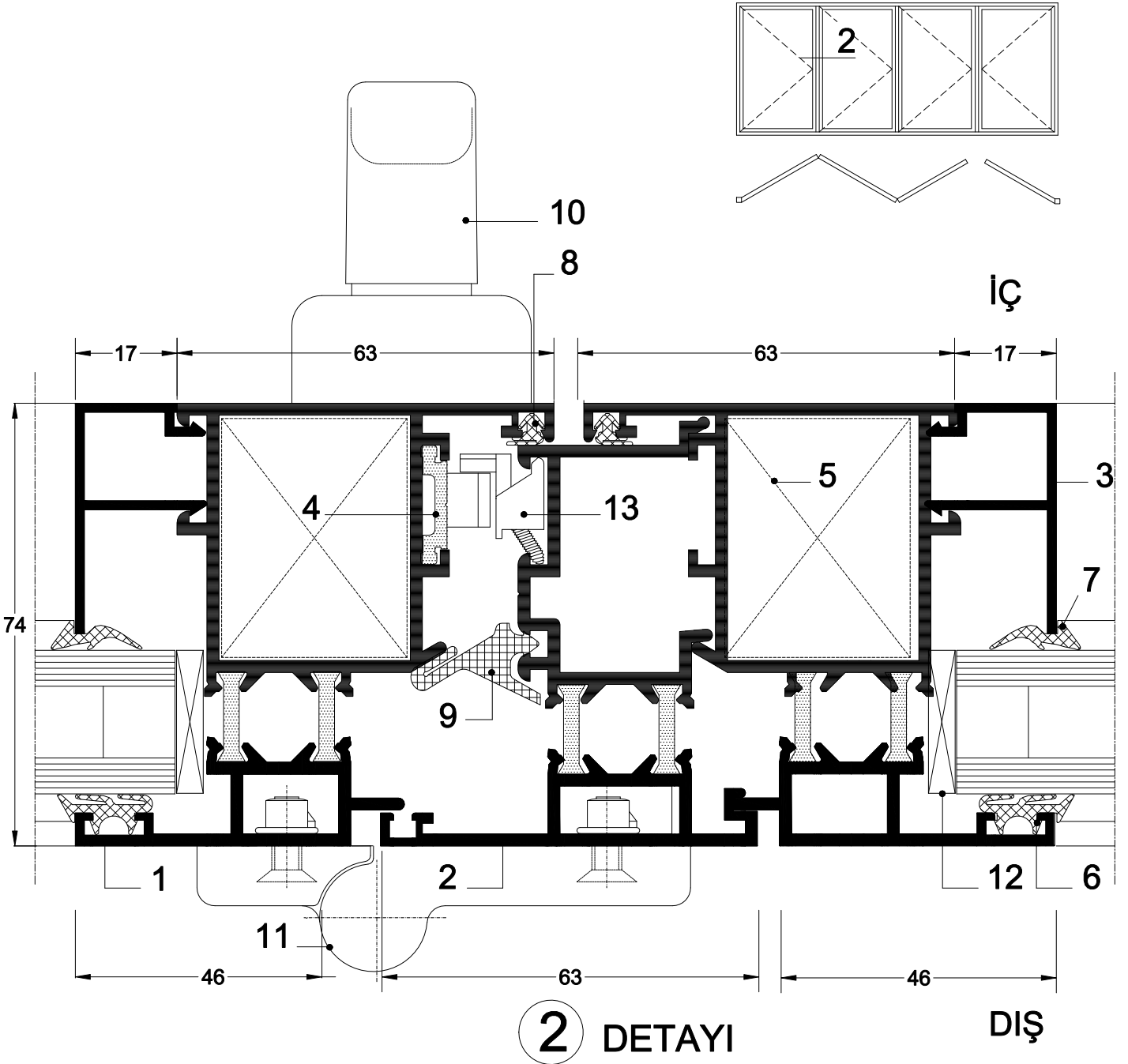
PROFİL	Ad.	KESİM ÖLÇÜSÜ (mm)	KESİM AÇISI
99-1044	2	H	45° x 45°
99-1044	2	L	45° x 45°
99-1048	2	L - 78,4	45° x 45°
99-1048	2	H - 78,4	45° x 45°
99-1050	1	H - 204.4	90° x 90°
88-006	2	H - 238.4	90° x 90°
88-006	2	L - 204.4	90° x 90°



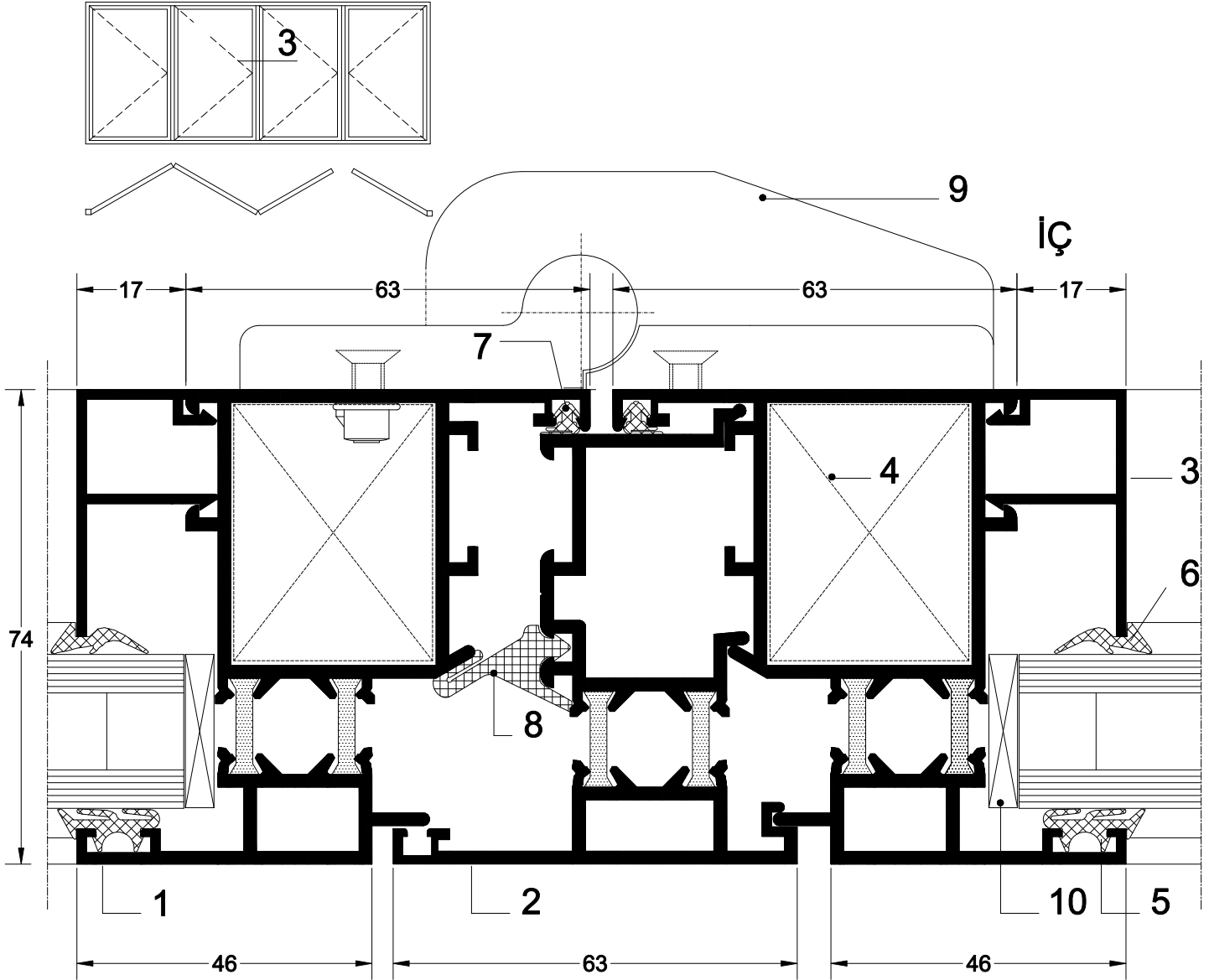


1. Kasa Profili	99-1044	9. Kasa Takoz Fiteli	2197
2. Kanat Profili	99-1048	10. Kanat Kulak Lastik Fiteli	2036
3. Cam Çıtası Profili	88-006	11. Macun Bant (ST-7-200)	2x40mm.
4. Kasa T' si	98-967	12. Isı Cam Takozu	YSP-05
5. Kasa Köşe Takozu	93-517	13. Körkasa	
6. Kanat Köşe Takozu	99-1054	14. Silikon	
7. Dış Cam Fiteli	2037	15. Bağlantı Vidası	6.3x50 YHB-A2
8. İç Cam Fiteli	2009A	16. Siegenia Katlanır Kapı Mekanizması	





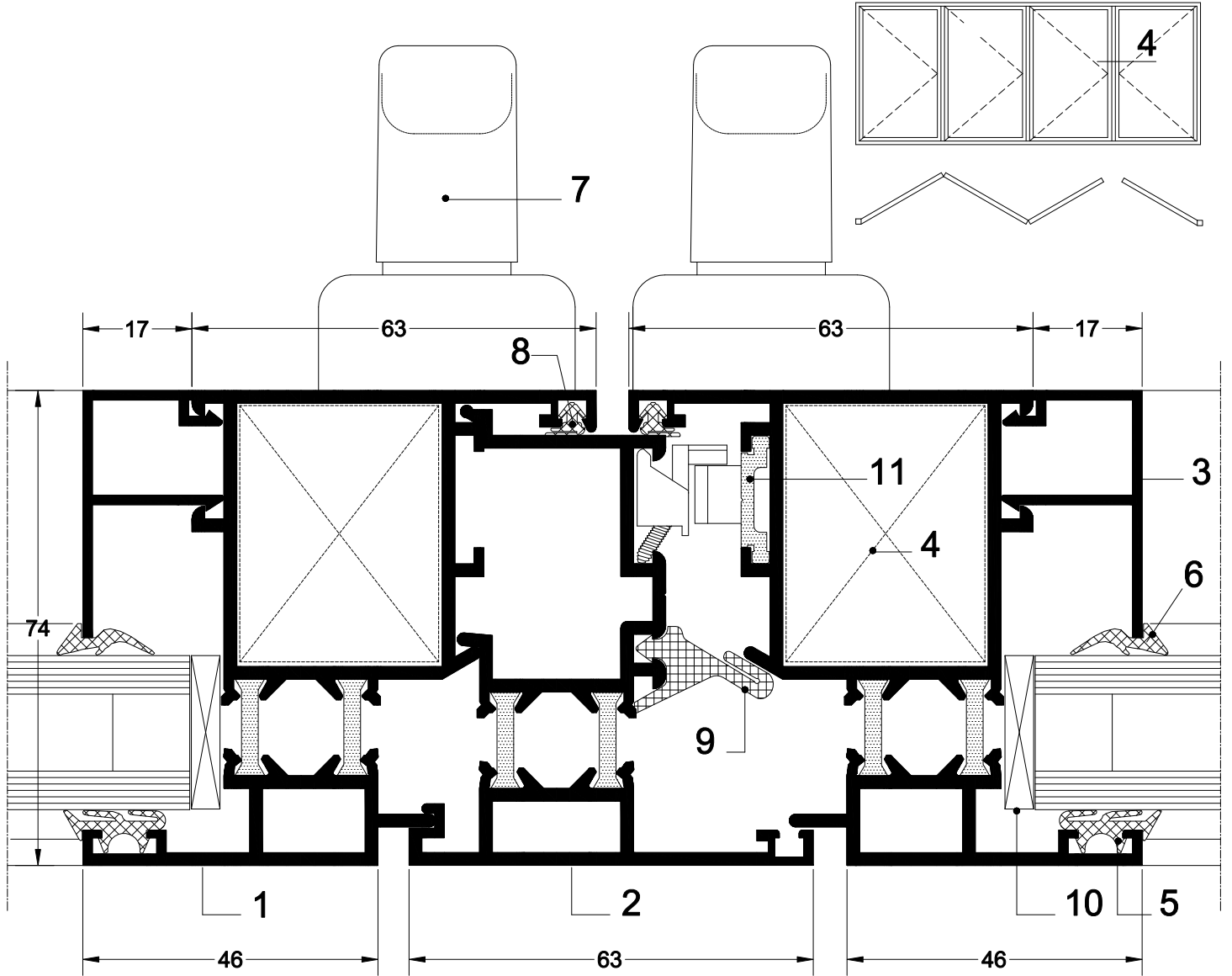
1. Kanat Profili	99-1048	8. Kanat Kulak Lastik Fiteli	2036
2. Adaptör Profili	94-669	9. Kasa Takoz Fiteli	2197
3. Cam Çıtası Profili	88-006	10. Siegenia Katlanır Kapı Mekanizma Kolu	
4. Tij Profili	88-033	11. Siegenia Katlanır Kapı Mekanizma Menteşesi	
5. Kanat Köşe Takoza	99-1054	12. Isı Cam Takoza	YSP-05
6. Dış Cam Fiteli	2037	13. Ayarlı Karşılık	
7. İç Cam Fiteli	2009A		



### 3 DETAYI

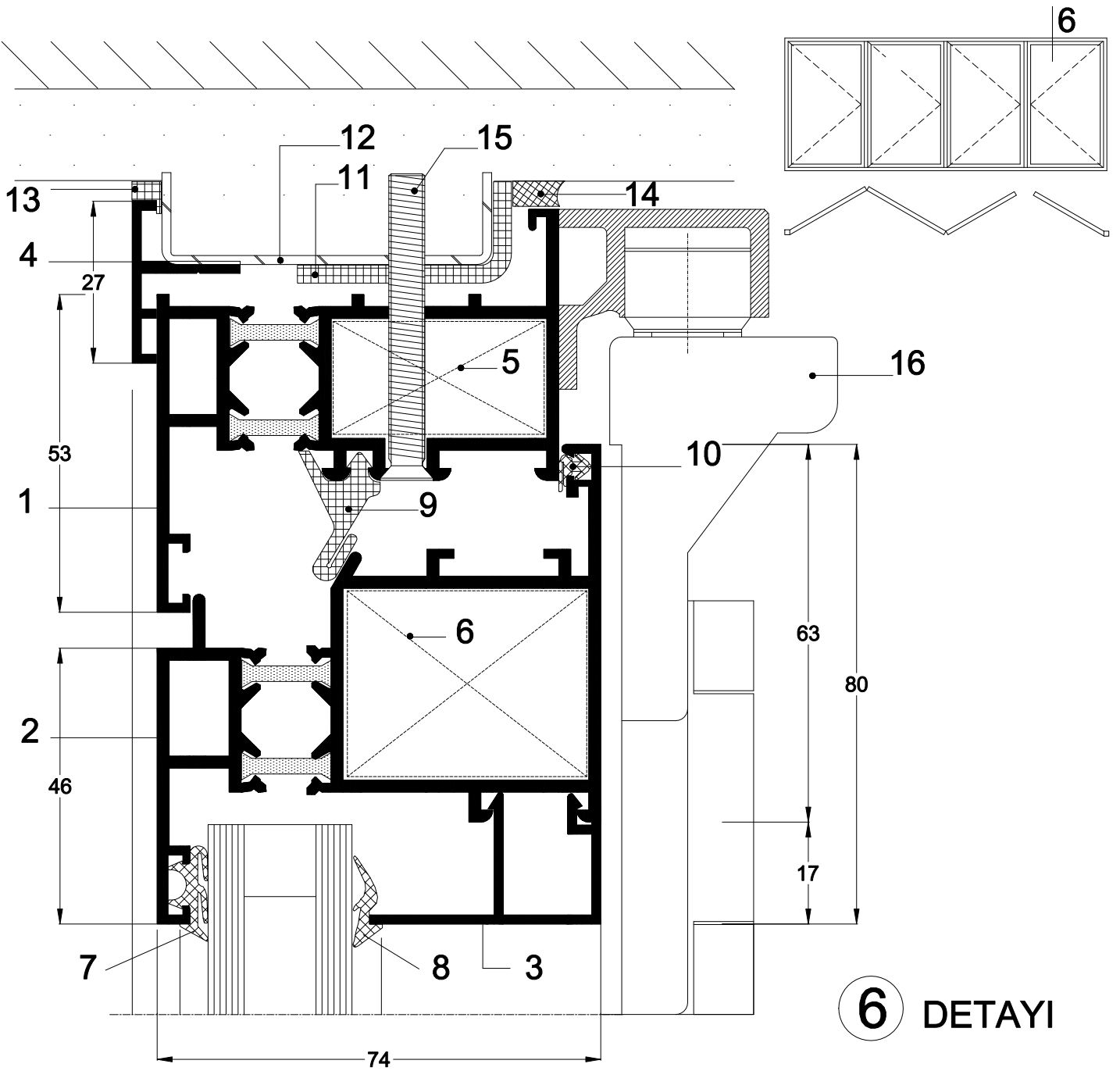
1. Kanat Profili	99-1048	7. Kanat Kulak Lastik Fiteli	2036
2. Adaptör Profili	94-669	8. Kasa Takoz Fiteli	2197
3. Cam Çıtası Profili	88-006	9. Sigenia Katlanır Kapı Mekanizma Menteşesi	
4. Kanat Köşe Takozu	99-1054	10. Isı Cam Takozu	YSP-05
5. Dış Cam Fiteli	2037		
6. İç Cam Fiteli	2009A		





### 4 DETAYI

1. Kanat Profili	99-1048	7. Siegenia Katlanır Kapı Mekanizması Kolu	
2. Adaptör Profili	94-669	8. Kanat Kulak Lastik Fitili	2036
3. Cam Çıtası Profili	88-006	9. Kasa Takoz Fitili	2197
4. Kanat Köşe Takozu	99-1054	10. Isı Cam Takozu	YSP-05
5. Dış Cam Fitili	2037	11. Tij Profili	88-033
6. İç Cam Fitili	2009A		



## 6 DETAYI

1. Kasa Profili	99-1044	9. Kasa Takoz Fiteli	2197
2. Kanat Profili	99-1048	10. Kanat Kulak Lastik Fiteli	2036
3. Cam Çıtası Profili	88-006	11. Macun Bant (ST-7-200)	2x40mm.
4. Kasa T' si	98-967	12. Körkasa	
5. Kasa Köşe Takozu	93-517	13. Silikon	
6. Kanat Köşe Takozu	99-1054	14. 602 Çekomastik (Beyaz-Kahverengi-Siyah)	
7. Dış Cam Fiteli	2037	15. Bağlantı Vidası	6.3x50 YHB-A2
8. İç Cam Fiteli	2009A	16. Siegenia Katlanır Kapı Mekanizması	