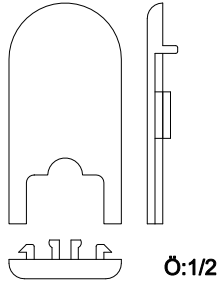
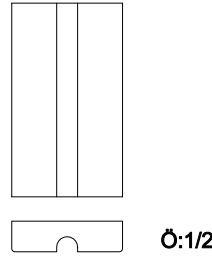


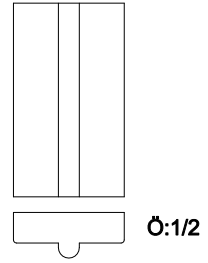
SLS 01A
PLASTİK STOPER



SLS 02
PLASTİK KAPAK



SLS 03-A
ALT SABİTLEME PLASTİĞİ



SLS 03
ÜST SABİTLEME PLASTİĞİ



2077 (4mm için)
E.P.D.M. CAM FİTİLİ



2009-A (3mm için)
E.P.D.M. CAM FİTİLİ



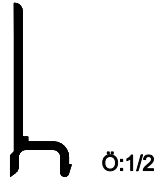
HY18 (2 mm için)
E.P.D.M. CAM FİTİLİ



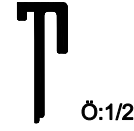
6.7 - 550 WF
FIRÇA FİTİL



40 D 02
E.P.D.M. FİTİL



SLS 09
KASA PLASTİĞİ



SLS 10
KENET PLASTİĞİ



40 D 6310
HAVUZLU KOL



40 D 6312
"D" KOL



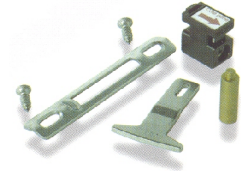
40 D 6318
ANAHTARLI KOL



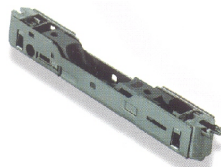
40 D 6316
BADEM KOL



40 D 6317
MEKANİZMASIZ
BADEM KOL

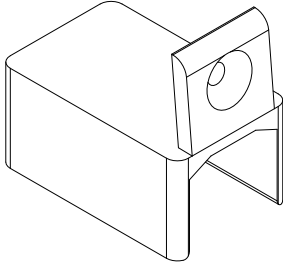


40 D 6321
KARŞILIK+DİL

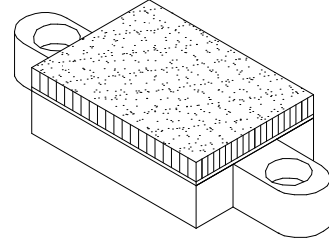


40 D 6302
SÜRME KİLİT İÇ MEKANİZMA

NOT : SÜRME DOĞRAMA KOLLARI SADECE
SİYAH VE NATUREL RENKTE SİPARİŞ VERİLEBİLİR.

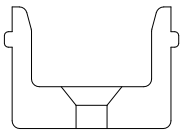
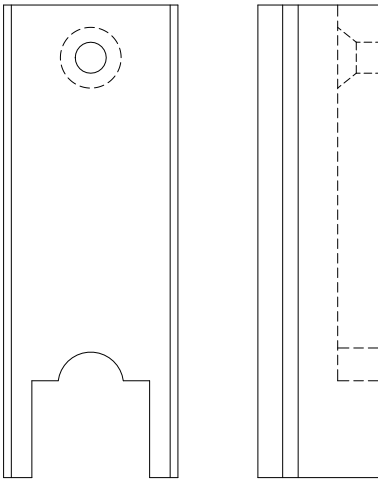


SLS-AP-1
ADAPTÖR PLASTİĞİ

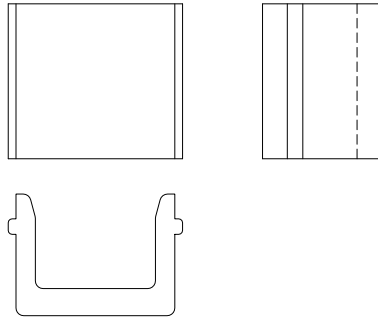


Ö:1/2

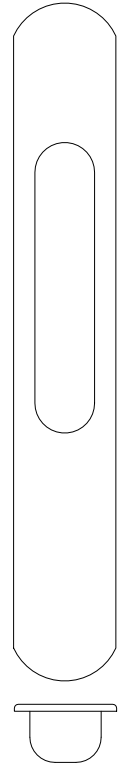
SLS 04
ÖZEL HALI + PLASTİK PARÇA
ALT ve ÜST TOZ TUTUCU



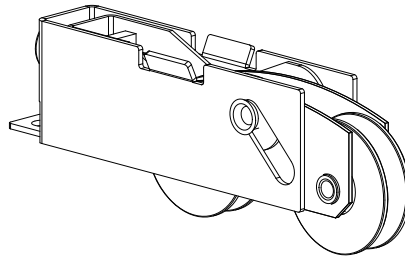
SLS 08-A
ALT VİBRASYON TAKOZU



SLS 08
ÜST VİBRASYON TAKOZU



HAVUZLU PLASTİK KOL
SLS 06
Ö:1/2



AYARLI RULMAN (ÇİFTLİ)